

Town of Orange

Plan of Conservation and Development

Public Workshop #2
April 2, 2025



BFJ Planning

INTRODUCTIONS



BFJ Planning

Planning & Zoning Commission/Town Staff

Oscar Parente, Esq., Chair

Judy Smith, Vice Chair

Kevin Cornell, Esq.

Thomas Torrenti, P.E.

Paul Kaplan, Esq.

Jack Demirjian, Zoning Administrator & Enforcement Officer

Consultant Team

Frank Fish, FAICP, Principal-in-Charge

Suzanne Goldberg, Project Manager

Michelle Gilman, AICP, Planner

Mark Freker, Transportation & Mobility

Thomas Madden, AICP, Economics Advisor

AGENDA

- 1** Presentation on Draft POCD Recommendations
- 2** Quick Break/Move to Tables
- 3** Breakout Table Discussions
- 4** Report Back

WHAT IS A PLAN OF CONSERVATION AND DEVELOPMENT?



An expression of the community's shared vision of the future.



A Town-wide framework for plans, initiatives, and investments. It lays the groundwork for decisions on the zoning code, capital budget, and general policy.



A “to-do list” for the Town to track implementation of short, medium, and long-term goals.

WHAT IS A PLAN OF CONSERVATION AND DEVELOPMENT?



TOWN OF ORANGE PLAN OF CONSERVATION AND DEVELOPMENT

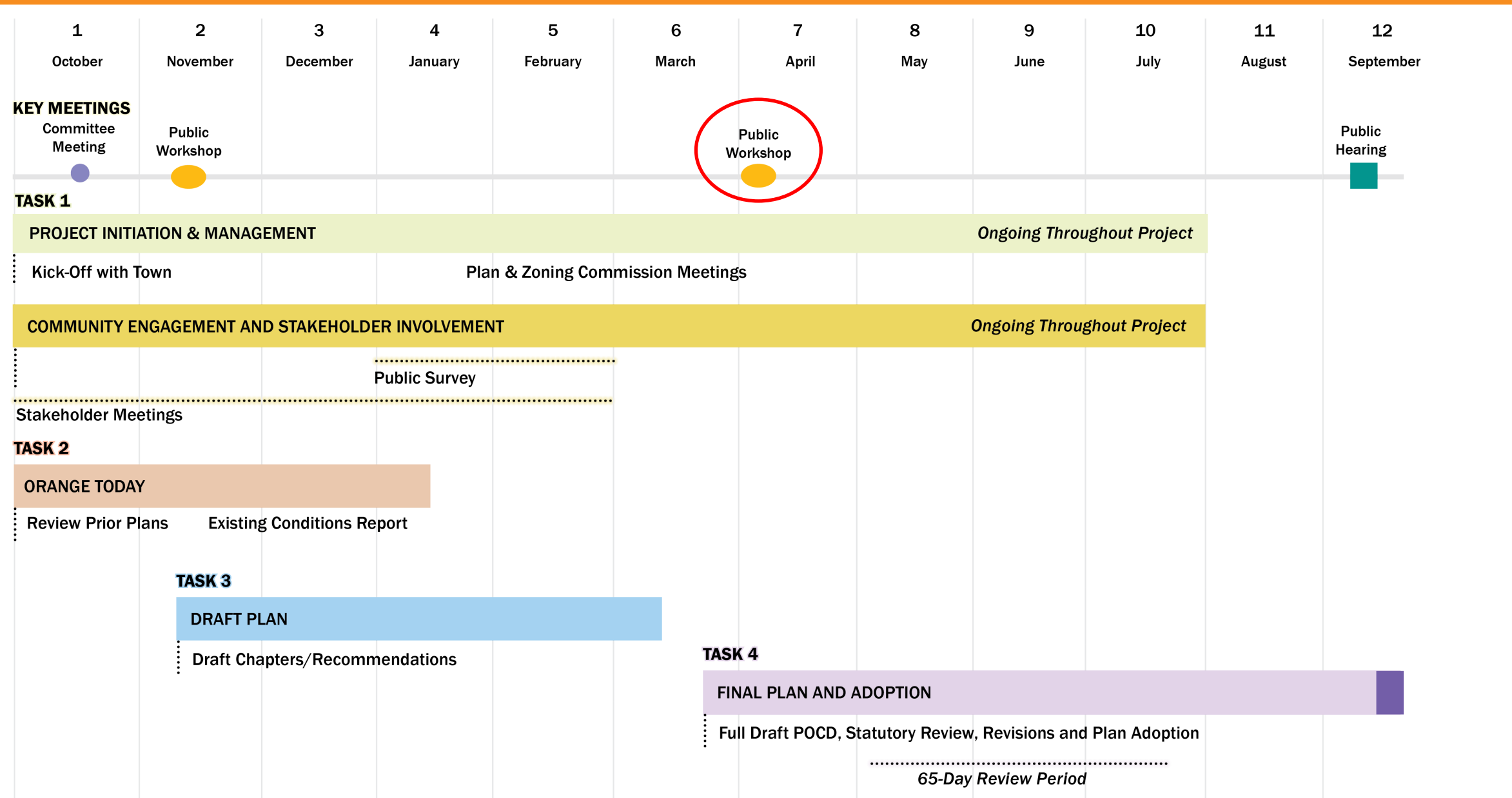


Prepared by:
BFJ Planning
115 5th Avenue
New York, NY 10003

DRAFT | February 18, 2025

- State law requires municipalities to update POCDs at least every 10 years.
- POCDs are not laws; they make recommendations on the Town's future. Zoning must be consistent with the POCD.

PROJECT OVERVIEW: POCD TIMELINE



POCD PLAN CHAPTERS

- 1 Introduction, Vision, and Goals
- 2 Demographics
- 3 Housing and Neighborhoods
- 4 Land Use and Zoning
- 5 Economic Development
- 6 Transportation and Mobility
- 7 Open Space, Historic, and Community Facilities
- 8 Infrastructure
- 9 Future Land Use Plan and Implementation

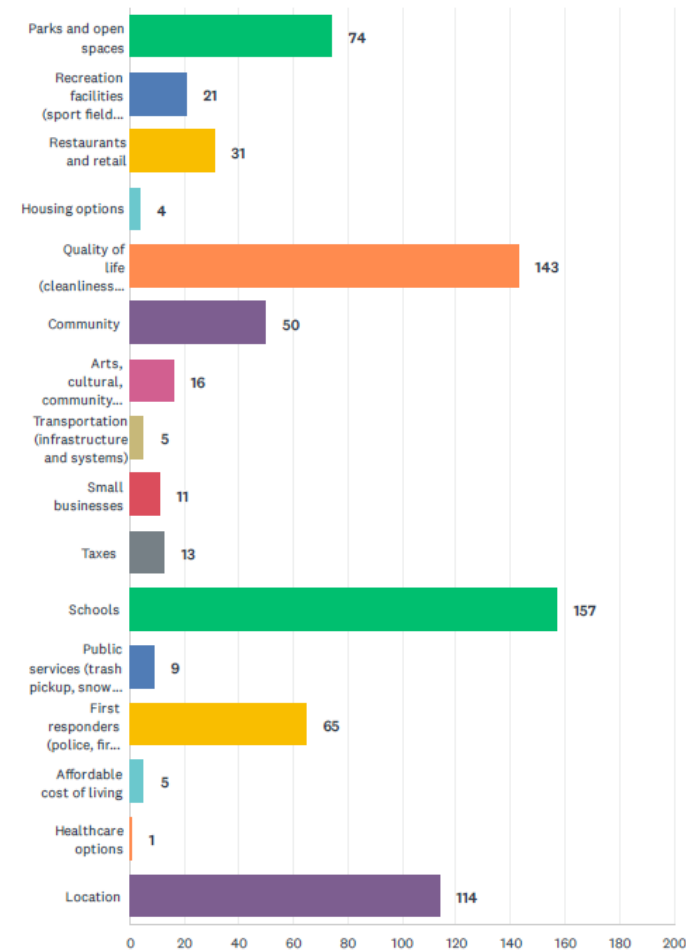
Available on the website
for public review
bit.ly/orange2025pocd

Next Draft Chapter

SUMMARY OF PUBLIC SURVEY RESULTS

What are the Town's greatest strengths? Please select your top three (3) choices.

Answered: 227 Skipped: 1

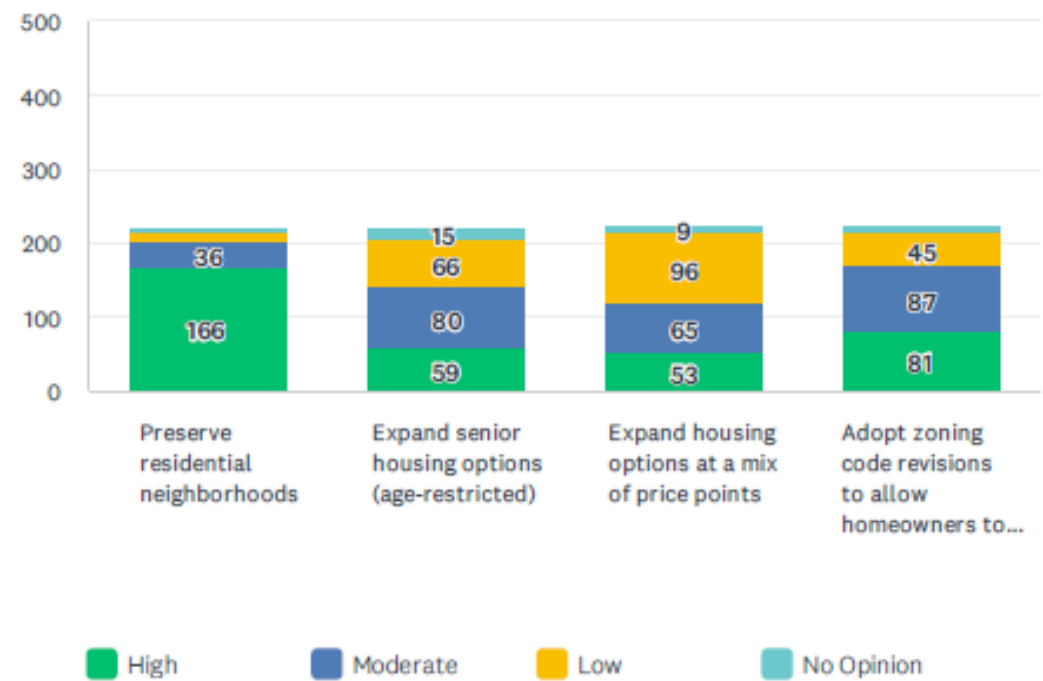


- **Top strengths:** schools, quality of life (cleanliness, safety, access to nature, sense of community, etc.), location, and parks and open space.
- **Biggest concerns:** affordable cost of living, taxes, and public services (trash pickup, snow plowing, etc.).

SUMMARY OF PUBLIC SURVEY RESULTS

During the next 5 years, what priority should the Town give to the following areas? [Rate: High, Moderate, Low, No Opinion]

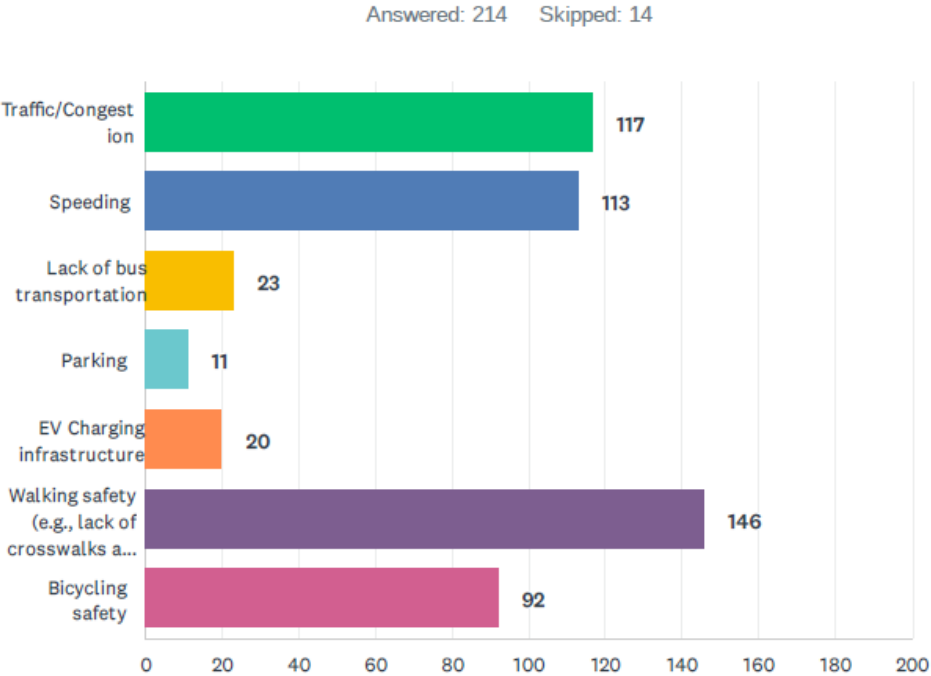
Answered: 226 Skipped: 2



- **High priority:** preserving residential neighborhoods.
- Most respondents believe that Orange has the **right amount and mix of housing types.**

SUMMARY OF PUBLIC SURVEY RESULTS

What, if any, are the transportation problems you regularly encounter in Orange? Please select up to three (3) choices.



- Around 55% of respondents stated they experience **traffic/congestion regularly**, 53% encounter **speeding**, and 43% reported issues of **bicycling safety**.
- Around 68% of respondents feel uncomfortable walking and think that **sidewalks are inadequate**.



PRELIMINARY PLAN VISION & RECOMMENDATIONS

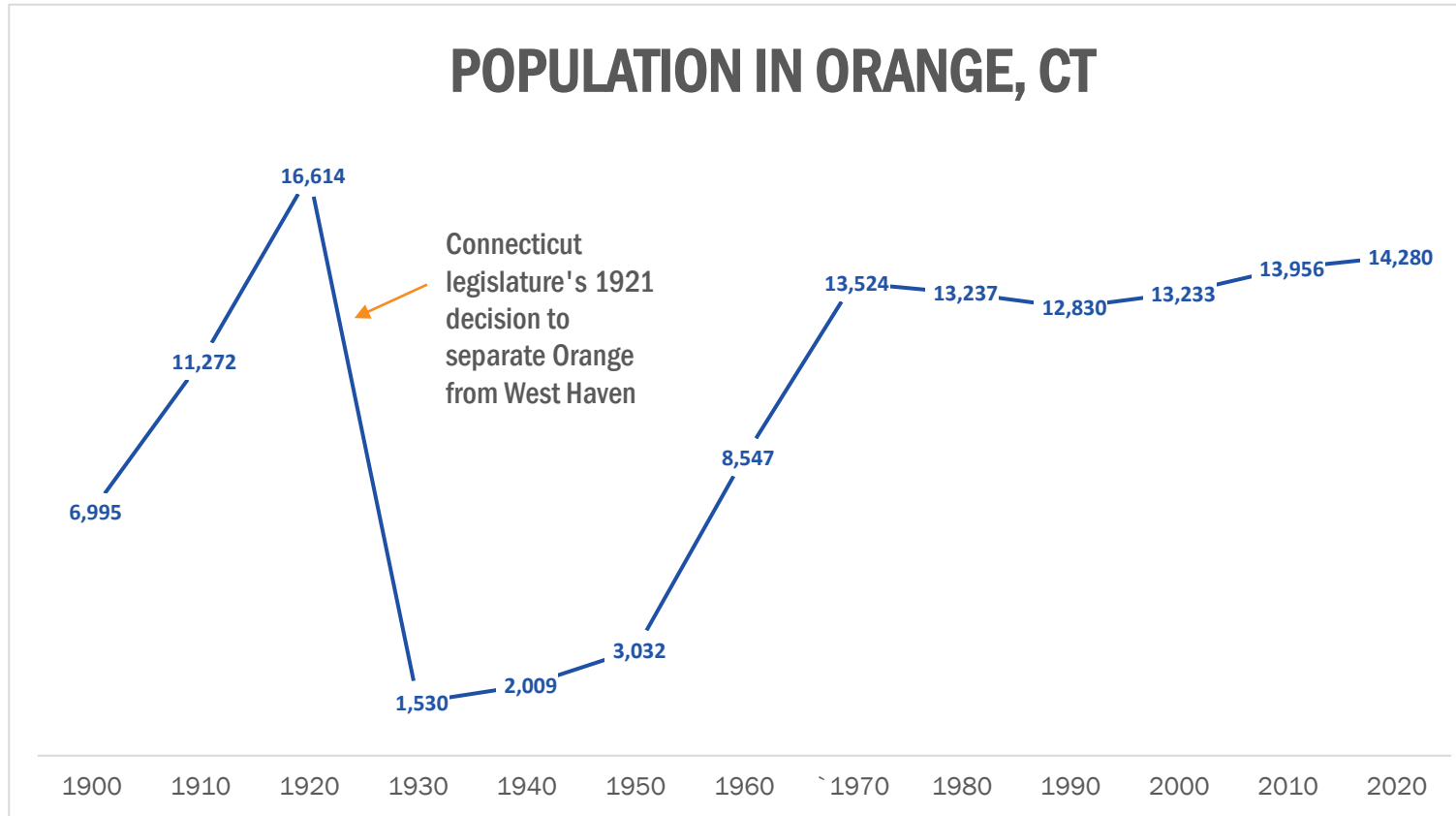
1 INTRODUCTION & VISION

PRELIMINARY VISION STATEMENT

The Town of Orange strives to:

- Preserve existing neighborhoods.
- Enhance environmental and open space preservation.
- Support local businesses and commercial areas.
- Maintain and improve community infrastructure—including facilities, utilities, and roads.

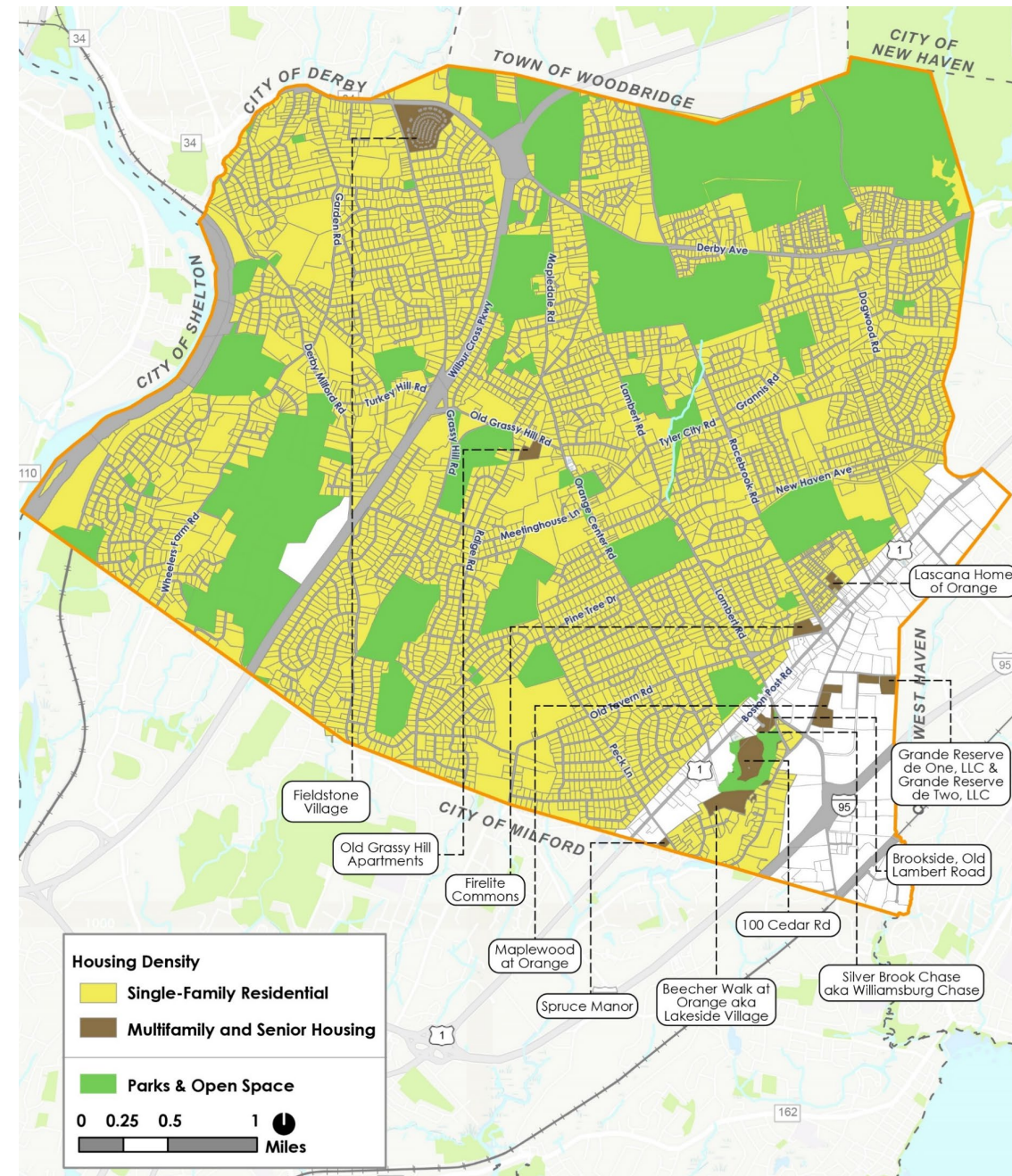
2 DEMOGRAPHICS



- From 1990 to 2000, the population increased by approx. 3.1%.
- From 2000 to 2010, the population increased by approx. 5.5%.
- From 2010 to 2020, the population increased by approx. 2.3%

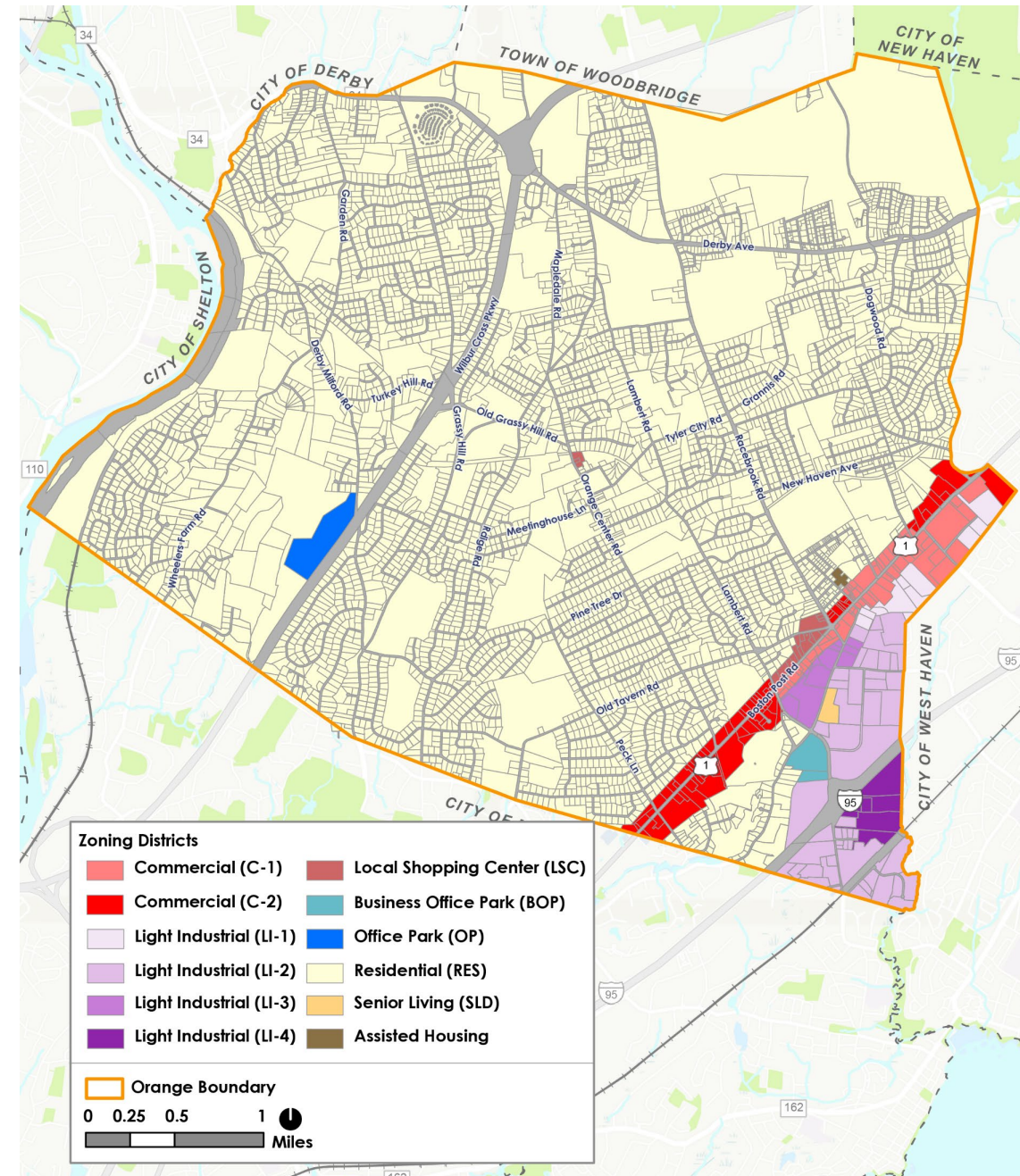
3 HOUSING & NEIGHBORHOODS

- Preserve existing residential neighborhoods.
- Continue to support a **diverse housing stock** to accommodate its population's evolving housing needs.
- Continue to promote **opportunities for affordable housing**.



4 LAND USE & ZONING

- Maintain **existing community character**.
- Continue to **preserve and expand open space**.
- **Agricultural uses** are important to Orange's identity and economy and should continue to be **supported**.
- **Route 1** is an important **commercial corridor**.
- Land use regulations need **regular review and updates to ensure consistency**.



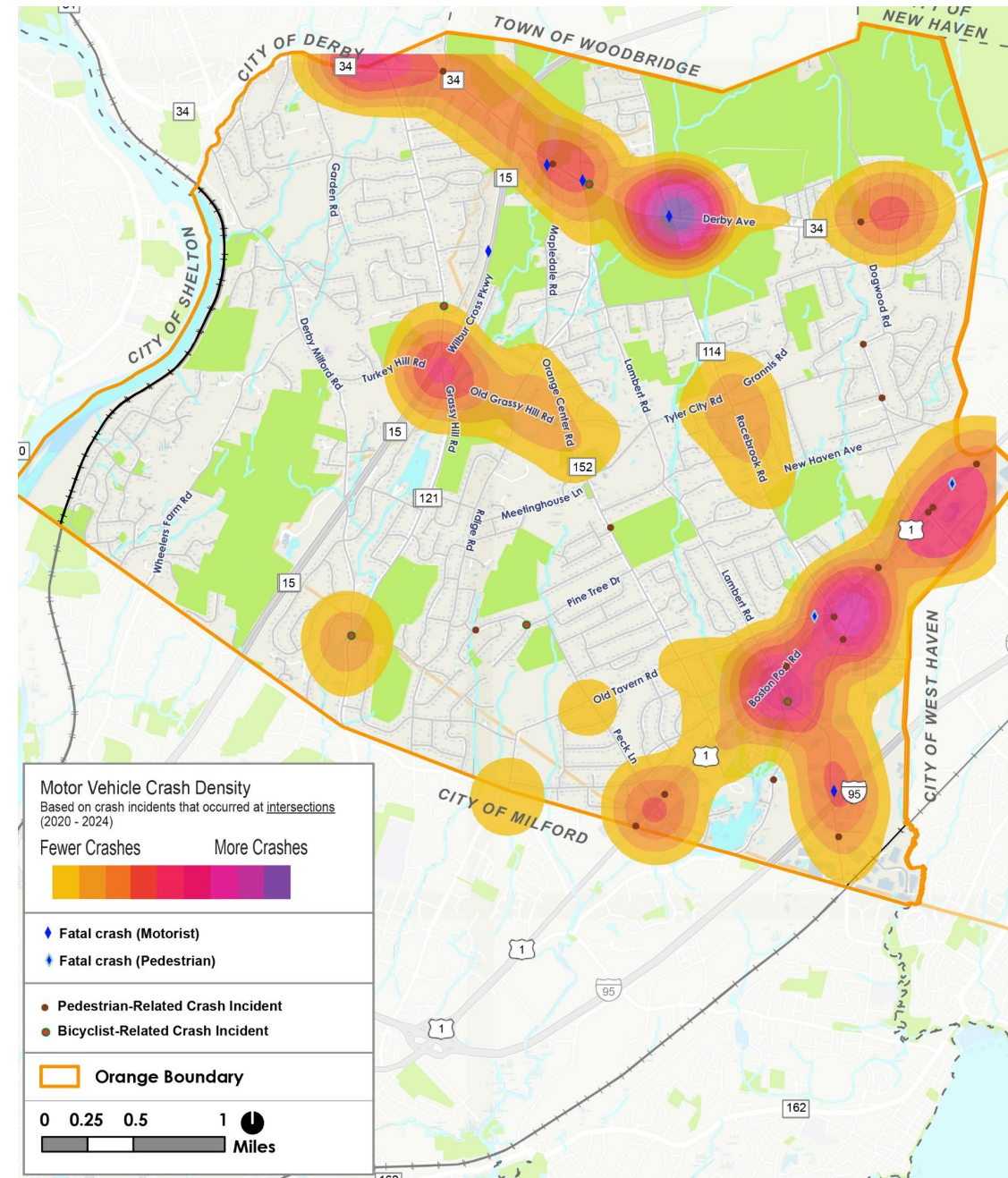
5 ECONOMIC DEVELOPMENT

- Strengthen and diversify the business base.
- Enhance industrial sector opportunities and small business growth.
- Promote adaptive reuse and redevelopment.
- Support workforce development.
- Promote tourism and community events.
- Maintain a competitive business climate and retain key employers.



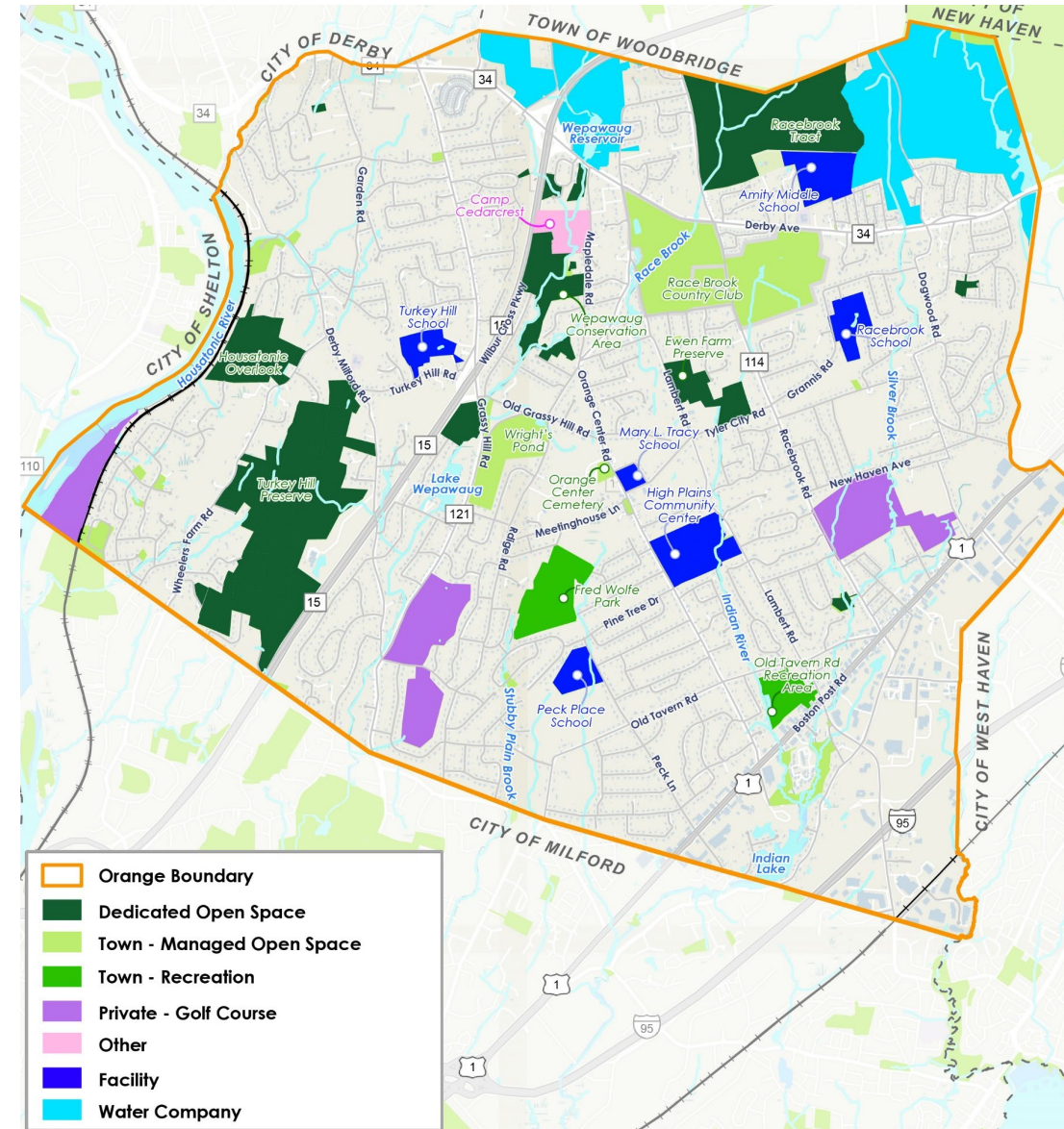
6 TRANSPORTATION & MOBILITY

- Continue to **coordinate with CTDOT** on ongoing and potential future roadway improvement studies and projects.
- Address overall **roadway efficiency** and **safety issues**.
- Address **speeding** and **traffic calming** in residential areas.
- Ensure the **vitality** and **traffic efficiency** of **Route 1** and adjacent uses.
- Continue to **improve pedestrian facilities**.
- Undertake a Town-wide **bicycle study** to assess current conditions and to identify opportunities for potential infrastructure improvements.
- Continue to **partner with CTtransit** to ensure evolving demographic changes in Orange are met with adequate service.



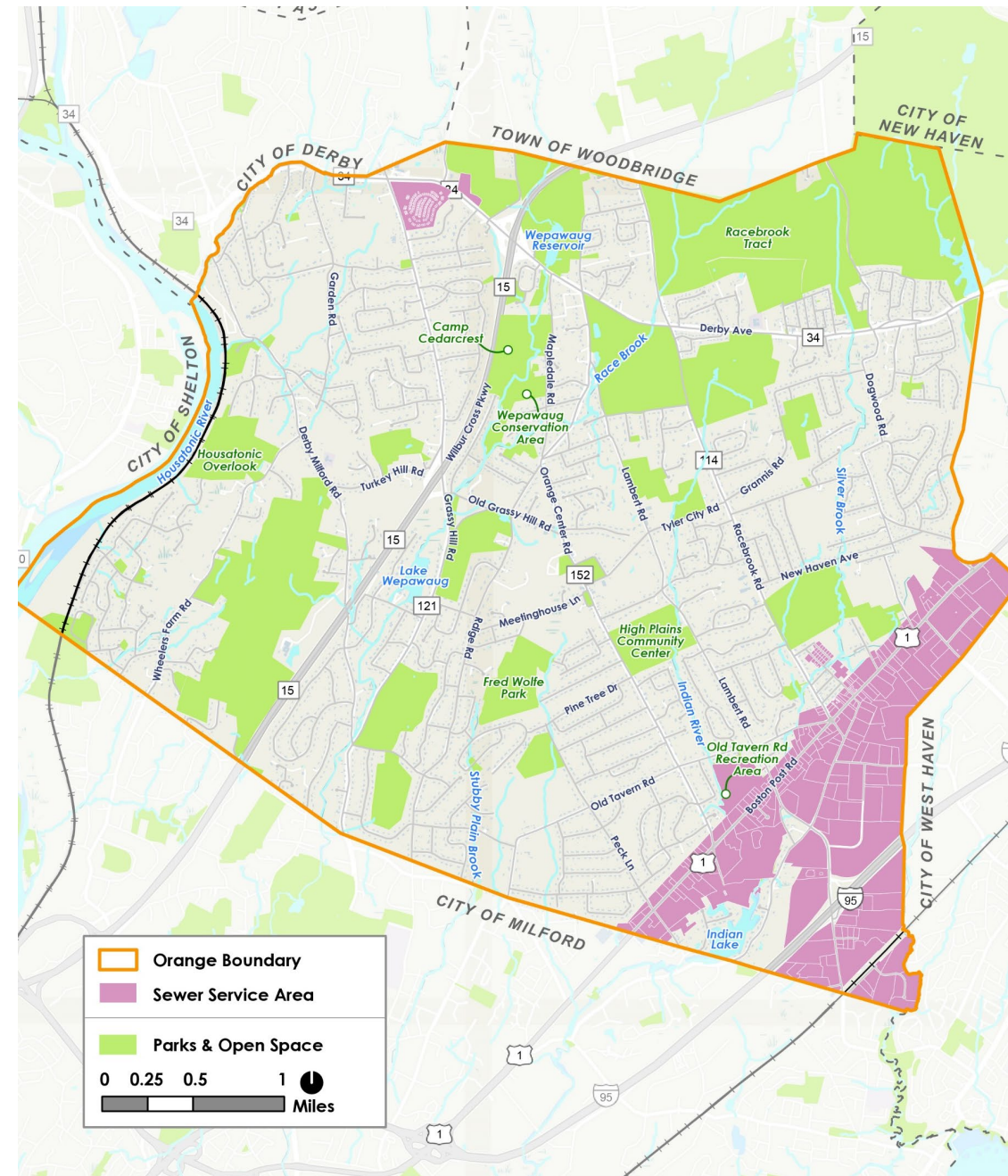
7 OPEN SPACE, HISTORIC, & COMMUNITY FACILITIES

- Continue open space preservation efforts.
- Document and promote recreational spaces.
- Maintain investment in recreational facilities.
- Continue agricultural/farmland preservation efforts.
- Protect historic resources.
- Maintain and improve community facilities and services.



8 INFRASTRUCTURE

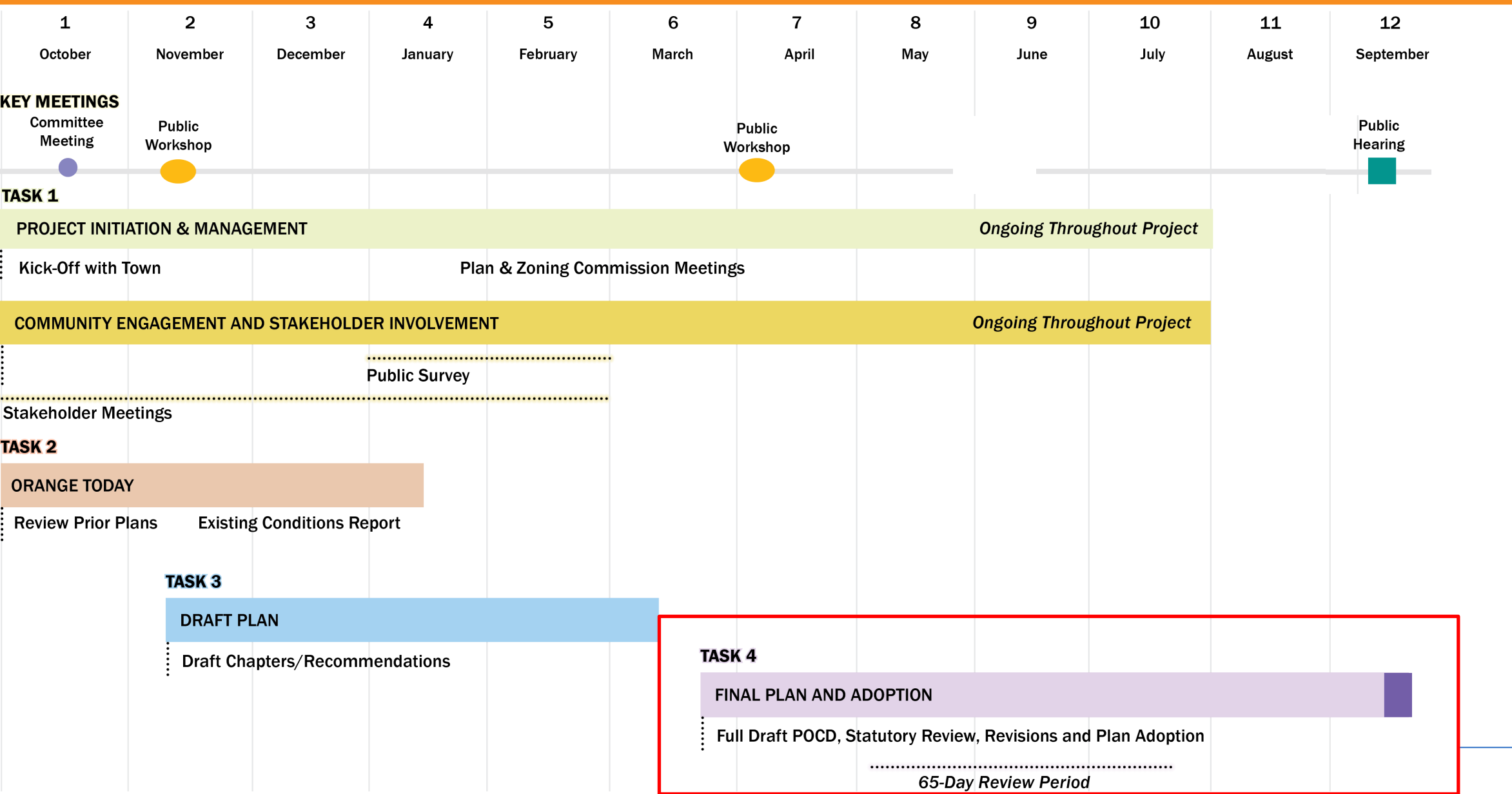
- Manage water quality and stormwater.
- Promote sustainable building practices.
- Encourage energy-saving practices.
- Manage sewage treatment and public water supply.



A photograph of a white, two-story church with a prominent steeple. The church is surrounded by large, leafy trees. In the foreground, a grassy lawn is filled with people and various items, including boxes, bags, and a small table, suggesting a community event or a yard sale. A white tent is visible on the left side of the church. The sky is clear and blue.

WHAT HAPPENS NEXT?

REMAINING TIMELINE



BREAKOUT TABLE DISCUSSION

- Choose a table. Remain there for the full discussion.
- All plan-related topics can be discussed at any tables. Some tables will offer a focus on a particular chapter.
- A representative from the Consultant Team or the Plan & Zoning Commission will facilitate the discussion and take notes.

REPORT BACK

- A spokesperson will report back on your table's discussion to the wider group.



Two large, colorful cow sculptures are positioned on a grassy field. The cow on the left is decorated with a pattern of yellow sunflowers and pink flowers. The cow on the right is decorated with a pattern of pink and blue flowers. Both cows have blue horns. The background features a line of trees and a white car parked on the left.

COFFEE BREAK