
Chapter 2: Demographics

Introduction

Past trends and historical information in Orange must be analyzed to plan for its future. The best available data is ordinarily the Decennial Census. However, according to a U.S. Census Bureau representative, some of the 2020 Census data was deemed unreliable partially due to the COVID-19 pandemic. The American Community Survey (ACS) data was published in its place. Additionally, some geographic areas were reclassified in connection with the 2022 ACS. The Town of Orange's "geographic area" determined by the Census was a County Subdivision in 2020, however, after 2021 the ACS classified the "geographic area" as a Census Designated Place (CDP). Therefore, each table in this section cites the source as either the Decennial Census or the ACS.

Pre-European Settlement

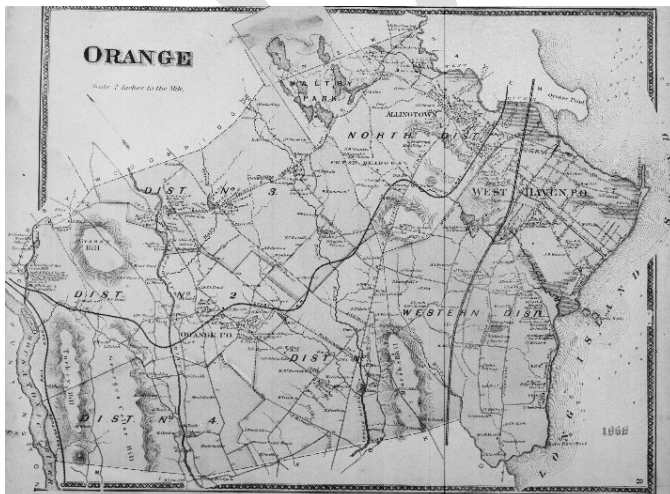
According to the 2015 POCD, human settlements in what is currently the Town of Orange date back about 10,000 years, however, the earliest written history of settlement patterns dates back approximately 400 years. The coastal lands of this area were inhabited by Native Americans of the Paugussett tribe and other Algonquian people.

Colonization

English and Dutch explorers and traders discovered areas around Orange in 1614 and began trading with Native American tribes. Settlement, primarily by Dutch and English migrants, in the area that now includes Orange began after the area was acquired from the Paugussett Tribe in 1639. Due to the arable land, the area grew as an agricultural community. The nearby waters also supported a thriving fishing industry. As described in the 2015 POCD, by 1800 the area then known as Milford included about 2,400 residents. In 1822, the area residents successfully petitioned the Connecticut legislature to establish a separate municipality, the Town of Orange.

Map of Orange, 1868

Source: Map and Geographic Information Center, Homer Babbidge Library, University of Connecticut.



Population Growth

Table 1 displays the population of Orange from 1900 to 2020. The significant population decline of 15,084 between 1920 and 1930 was primarily due to the Connecticut legislature's 1921 decision to separate Orange from West Haven. The largest population increase of 5,515, or approximately 182%, from 1950 to 1960 was due to the Baby Boom. The increase of 4,977, or approximately 58%, from 1960 to 1970 reflected the end of the Baby Boom, which lasted from around 1946 to 1964. From 1990 to 2000, the population increased by around 3%. Population increased by 5.5% from 2000 to 2010, then increased by approximately 2% percent in 2020. It is expected that the population will increase at a lower rate in coming decades, as much of the land area has been developed and there is a recent trend of smaller households.

Table 1: Population Growth, Orange, CT, 1900-2020

Source: U. S. Census Bureau, Decennial Census, 1900-2020

Year	Population	Change	% Change
1900	6,995	2,458	54.2%
1910	11,272	4,277	61.1%
1920	16,614	5,342	47.4%
1930	1,530	-15,084	-90.8%
1940	2,009	479	31.3%
1950	3,032	1,023	50.9%
1960	8,547	5,515	181.9%
1970	13,524	4977	58.2%
1980	13,237	-287	-2.1%
1990	12,830	-407	-3.1%
2000	13,233	403	3.1%
2010	13,956	723	5.5%
2020	14,280	324	2.3%

Population Changes

Chart 1 illustrates the age group distribution in Orange for both 2010 and 2020. The proportions of the following age groups remained largely unchanged between these years: under 5 years, 5 to 9 years, and 10 to 14 years. The most significant decline occurred in the 15 to 19-year-old age group, which saw a notable decrease. The second-largest decline was in the 40 to 44-year-old age group. Additionally, approximately one-third of the population in both 2010 and 2020 was 55 years or older, suggesting that many residents have chosen to age in place.

The small proportionate changes in the age groups between 2010 and 2020 resulted in the median age remaining relatively high. It increased from approximately 45 years in 2010 to approximately 47 years in 2020. This is significantly older than the New Haven County median age of approximately 39 years in 2010 and 40 years in 2020 (see Table 2).

ORANGE POCD UPDATE- DRAFT

Chart 1: Age Group Distribution, Town of Orange CT 2010 & 2020

Source: U.S. Census Bureau, Decennial Census 2020, ACS 2010

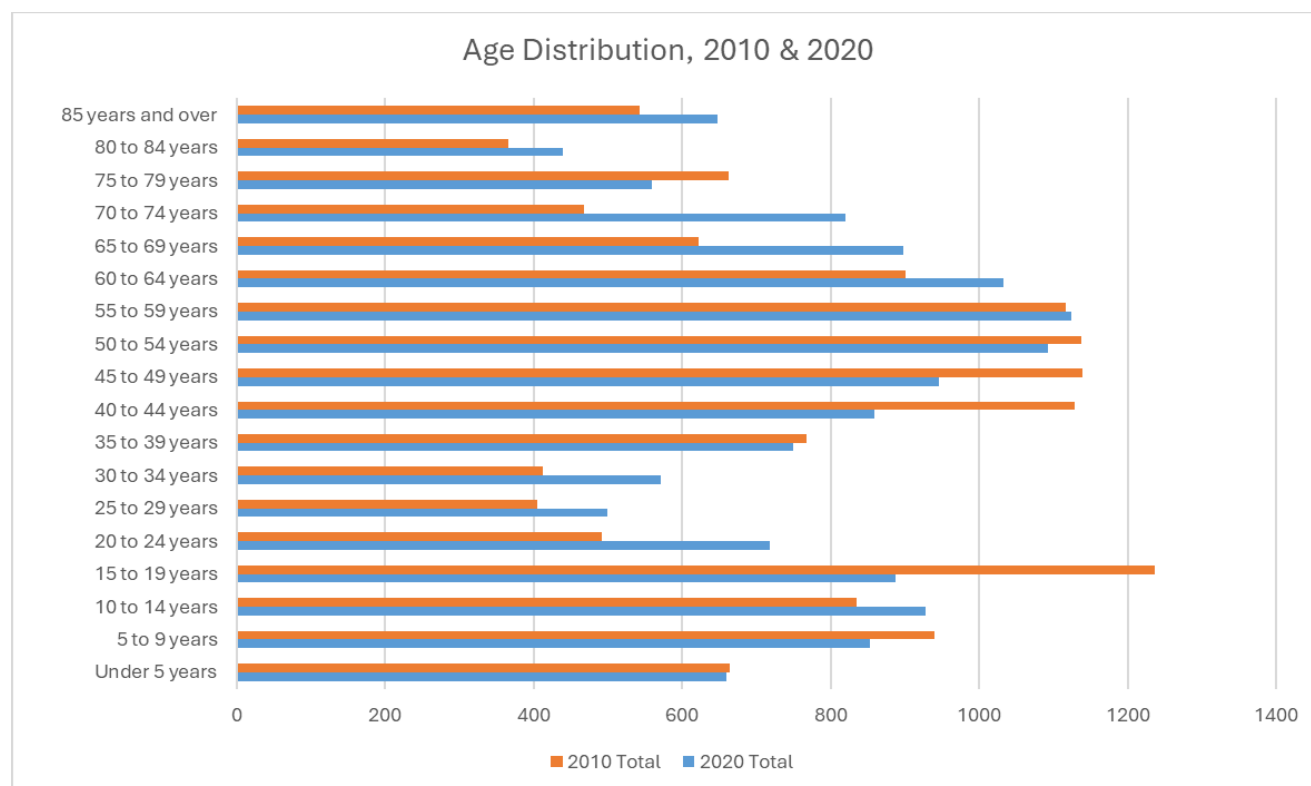


Table 2: Median Age, Town of Orange and New Haven County, CT 2010 & 2020

Source: U.S. Census Bureau, Decennial Census 2020, ACS 2010

Geographic Area	2010 Median Age (Years)	2020 Median Age (Years)
Orange	45.2	47.4
New Haven County	39.2	40.4

Race and Ethnicity

The racial and ethnic background of Orange residents in 2010 and in 2020 is shown in Charts 2 and 3. Orange's population is predominantly White, making up approximately 89% of the population in 2010 and 80% in 2020. Between 2010 and 2020, the percentage of Asian residents increased by approximately 5%, and the percentage of Black or African American residents increased by approximately 2%. The percentage of Hispanic or Latino residents also increased slightly from 3% in 2010 to 5% in 2020 (see Table 3).

ORANGE POCD UPDATE- DRAFT

Chart 2: Racial and Ethnic Background, Town of Orange, CT, 2010

Source: U.S. Census Bureau, Decennial Census, P9. 2010.

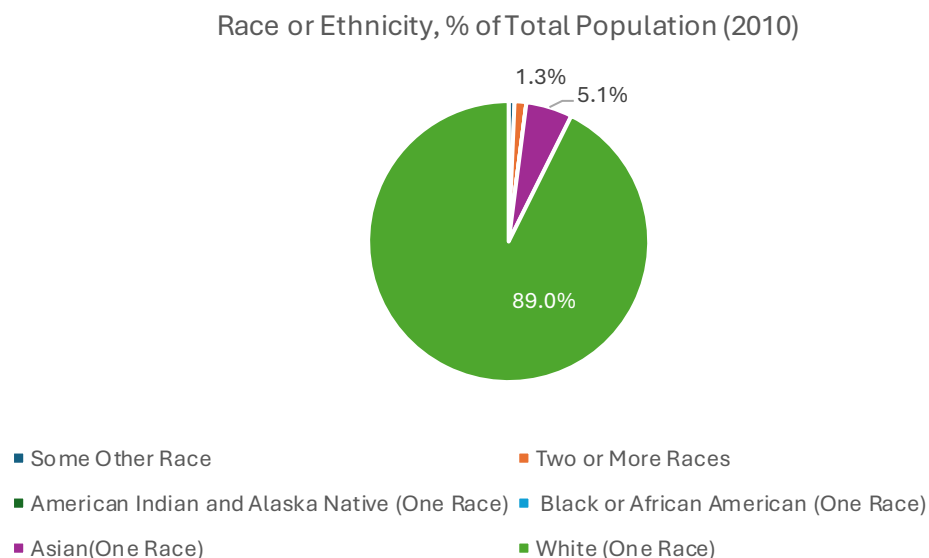


Chart 3: Racial and Ethnic Background, Town of Orange, CT, 2020

Source: U.S. Census Bureau, Decennial Census, P9. 2020.

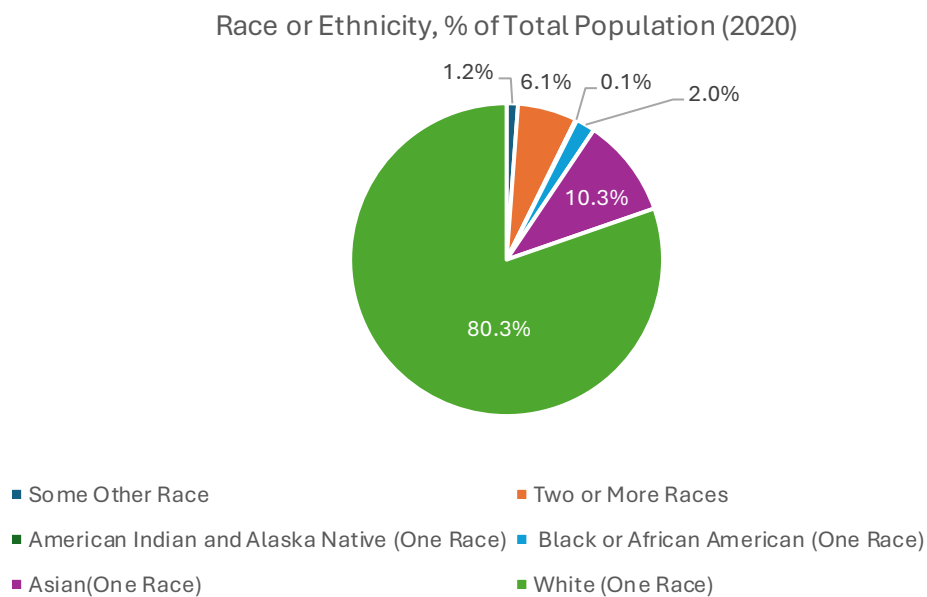


Table 3: Hispanic or Latino Population, Town of Orange, CT 2010 & 2020

Source: U.S. Census Bureau, Decennial Census, P9. 2010, 2020.

	2010 Population	2010 % of Total Population	2020 Population	2020 % of Total Population
Hispanic or Latino (of any race)	398	3%	715	5%
Not Hispanic or Latino	13,558	97%	13,565	95%

Language Spoken at Home

Another indicator of the diversity of a community are the languages spoken at home. Table 4 shows languages spoken at home in 2010 and 2020.

The portion of Spanish speaking people decreased by approximately 1% between 2010 and 2020. Other Indo-European languages account for a more significant proportion of the other languages spoken at home, as it includes several languages.

Table 4: Language Spoken at Home, Town of Orange CT, 2010 & 2020

Source: U. S. Census Bureau, American Community Survey, 2010 & 2020, Table S1601

Language Spoken at Home (Population 5 years & over)	2010 Total % of Population	2020 Total % of Population
Speak only English	85.9%	84%
Spanish or Spanish Creole	2.6%	1.8%
Other Indo-European	7.6%	7.9%
Asian & Pacific Islander	3.9%	5.2%
Other languages	0%	1%

Mobility

Table 5 shows the previous locations of residents who moved to Orange. In 2020, 3.4% of the population over 1 year old moved from elsewhere in New Haven County and 2.7% moved from another state.

Table 5: Mobility, Town of Orange CT, 2010 & 2020

Source: US Census Bureau, Table S0701, ACS, 2020 & 2010

	From Same County		From Other County		From Other State		From Abroad	
	2010	2020	2010	2020	2010	2020	2010	2020
% Total Population 1 year +	3.1%	3.4%	0.2%	0.7%	1.2%	2.7%	0.1%	0.6%

School Enrollment

As shown in Table 6, enrollment in Orange Public Schools (kindergarten through sixth grade) remained relatively stable, ranging from 1,169 students in FY 2015-2016 to 1,247 students in FY 2024-2025. The most significant decline occurred between FY 2015-2016 and FY 2016-2017, with a decrease of 28 students. The largest increase took place between FY 2018-2019 and FY 2019-2020, when enrollment rose by 42 students.

ORANGE POCD UPDATE- DRAFT

Table 6: Town of Orange School Enrollment, Kindergarten-6th Grade, FY 15-26 through FY 25-26

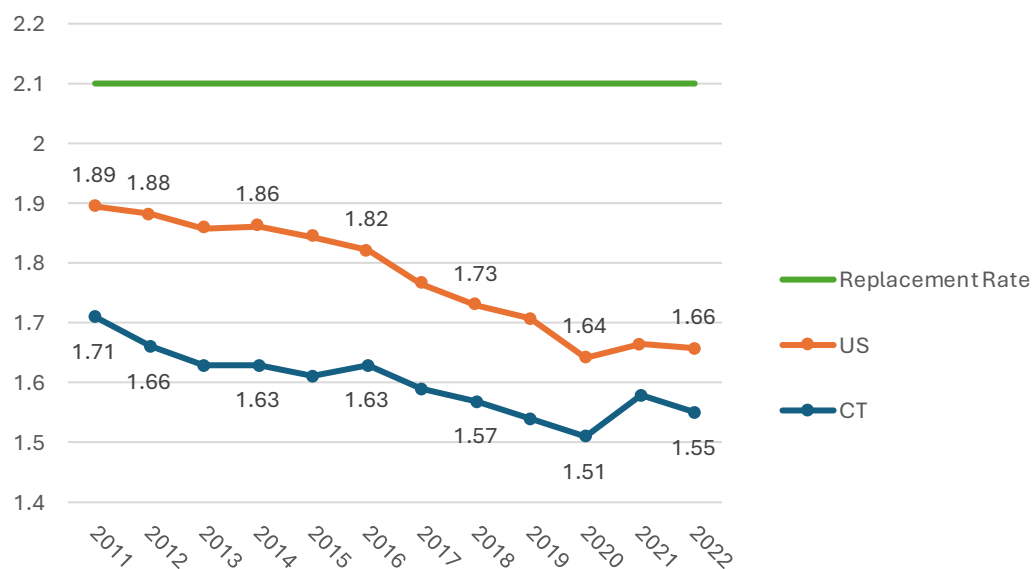
Source: Orange Board of Education

Fiscal Year	Number of Orange Public School Students (K-6)	Change in Number of Students from Previous Year
2015-2016	1,169	
2016-2017	1,141	-28
2017-2018	1,151	10
2018-2019	1,147	-4
2019-2020	1,189	42
2020-2021	1,201	12
2021-2022	1,236	35
2022-2023	1,232	-4
2023-2024	1,242	10
2024-2025	1,247	5

Beyond local trends, it is important to examine national trends as well. The Center for Disease Control (CDC) defines the total fertility rate as the expected number of lifetime births per 1,000 women according to current age-specific birth rates. A total fertility rate of 2.1 would be needed to replace the population over time. The current fertility rate is 1.66 in America and 1.55 in Connecticut (see Chart 4). This is a major reason that the population in the State of Connecticut has not been growing.

Chart 4: Total Fertility Rate Connecticut and the United States (2011-2022)

Source: Center for Disease Control (CDC), Fertility Rates by State, 2014-2022



Educational Attainment

Orange's adult population is well-educated. Charts 5 and 6 show that in 2020, approximately 29% of residents 25 years or older had a Bachelor's Degree and 32% percent had a Graduate or Professional Degree. This increased from 2010, in which approximately 26% of residents 25 years or older had a Bachelor's Degree and 29% percent had a Graduate or Professional Degree.

Chart 5: Educational Attainment, Town of Orange, CT, 2010

Source: U.S. Census Bureau, ACS, Table DP 02.

Educational Attainment, % of Population (2010)

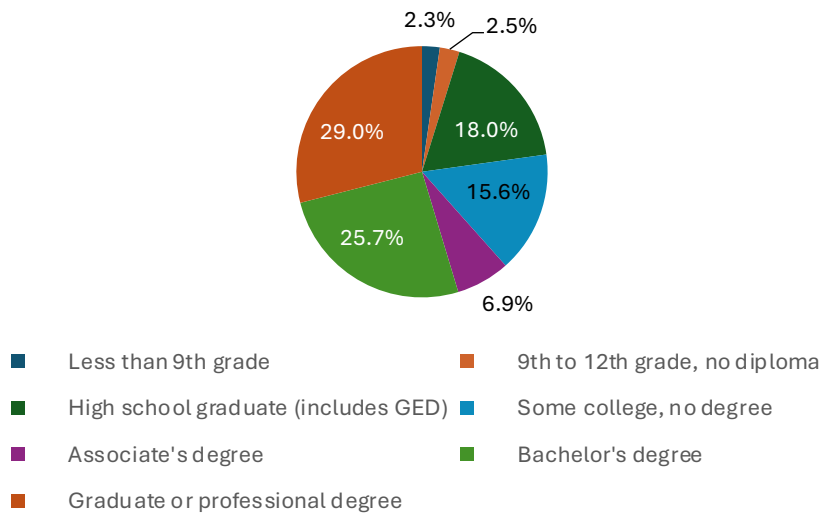
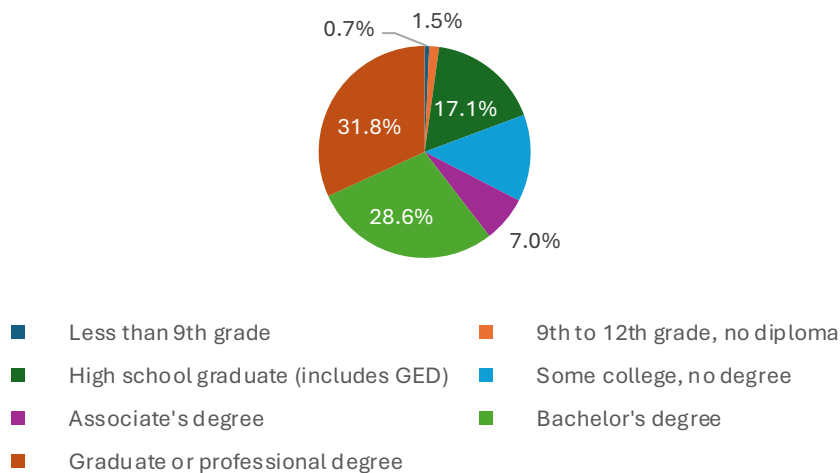


Chart 6: Educational Attainment, Town of Orange, CT, 2020

Source: U.S. Census Bureau, ACS, Table DP 02.

Educational Attainment, % of Population (2020)



Median Income

The median income for households, families, married-couple families, and non-families is consistently higher in the Town of Orange as compared to New Haven County (see Table 7). Between 2010 and 2020, the median household income in Orange rose from \$102,255 to \$129,489, reflecting a greater increase than New Haven County's median household income, which grew from \$57,056 to \$71,370 over the same period.

Table 7: Median Household Income, Town of Orange and New Haven County, CT, 2010 & 2020

Source: U.S. Census Bureau, Table S1901, American Community Survey (ACS) 2020, 2010

	Household	Family	Married Couple Family	Non-Family
2010 Median Income in Orange, CT (dollars)	\$ 102,255	\$ 115,685	\$ 123,060	\$ 40,436
2020 Median Income in Orange, CT (dollars)	\$ 129,489	\$ 146,417	\$ 157,480	\$ 60,750
2010 Median Income in New Haven County, CT (dollars)	\$ 57,056	\$ 73,219	\$ 91,140	\$ 34,030
2020 Median Income in New Haven County, CT (dollars)	\$ 71,370	\$ 92,508	\$ 113,807	\$ 42,248

Employment by Industry

Over half of the Town of Orange's civilian employed population 16 years and over, was employed in the management, business, science, and arts industry in both 2010 and 2020 (see Chart 7). This employment category includes a wide range of skilled professions, including education, finance, law, technology, etc., and grew by over 3% between 2010 and 2020. The second most prevalent employment category in Orange in both 2010 and 2020 was the sales and office occupations sector, encompassing a range of roles in retail, administrative support, and more. Occupations in this category decreased by over 6% between 2010 and 2020. The third most popular category in this timeframe was service occupations, including jobs in food services, personal care, and related fields, having increased by approximately 3% between 2010 and 2020.

Chart 7: Occupation by Industry, Town of Orange, CT, 2010 & 2020

Source: U.S. Census Bureau, ACS, Table DP03, 2010, 2020.

